



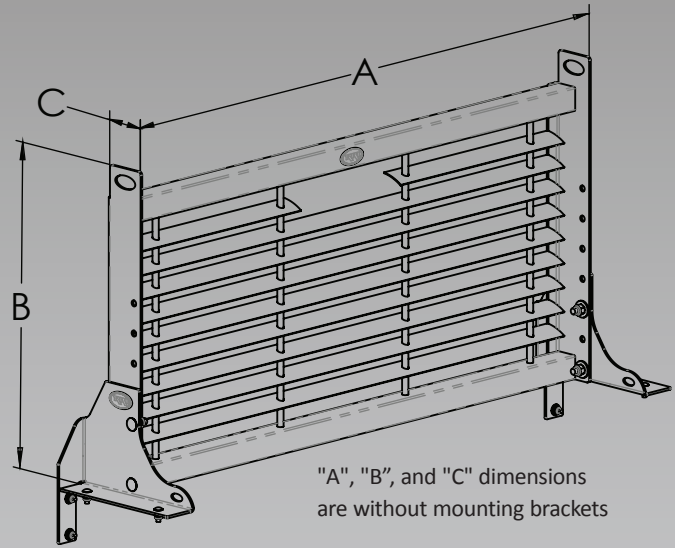
COMMERCIAL GRADE TRUCK EQUIPMENT

Service Body Window Grilles

RKI Window Grilles protect your rear window from accidental breakage and protect your truck's interior from sun damage, while allowing unobstructed visibility.

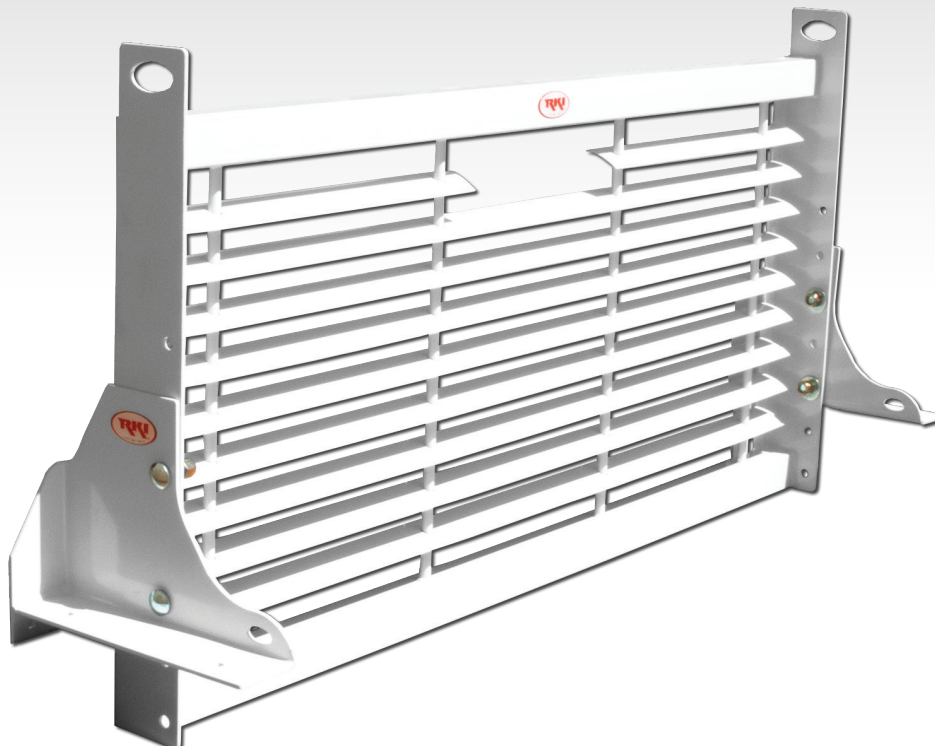
STANDARD FEATURES

- RKI Window Grilles are built of heavy duty steel with a polyester powder coat finish to provide many years of dependable service
- Engineered for application with RKI Service Bodies, including L/R combinations like an ST5680
- Vertical adjustment on both side of 10" on 2 1/2" increments to fit Chevy, Ford, GMC, and Ram trucks
- Convenient tie downs integrated at the top and bottom to aid in securing cargo
- Rear cutout for stoplight visibility
- All WG products are also available in black powder coat finish—just add a "B" to the end of the model number



SPECIFICATIONS

Model	Load Area Width	A Length	B Height	C Depth	Approx. Weight (lbs)
STEEL					
WG49	49"	48 1/2"	27"	3 3/4"	61
WG50	50"	49 1/2"	27"	3 3/4"	61
WG51	51"	50 1/2"	27"	3 3/4"	62
WG54	54"	53 1/2"	27"	3 3/4"	62
WG60	60"	59 1/2"	27"	3 3/4"	68
WG65	65"	64 1/2"	27"	3 3/4"	70



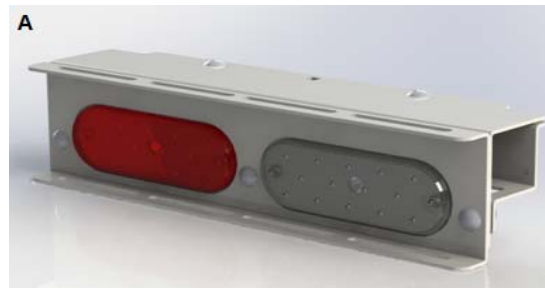


* Window Grille shown with Light Kit and Optional round strobe mount.

LIGHT KIT FOR WINDOW GRILLES		
Item	Part Number	Description
A	BWGLITEMNT	LED LIGHT KIT FOR WINDOW GRILLES (PAIR)
B	BWGLITEMNTB	BLACK LED LIGHT KIT FOR BLACK WINDOW GRILLES (PAIR)

Features

- Provides greater visibility to surrounding traffic especially with cargo in tow
- Standard LED lights provide high visibility while consuming less power
- Easy installation "Bolt On" design
- Incorporated light guard offers protection to the LED lights from cargo
- Compatible with all RKI Window Grilles
- Available in durable white or black powder coat finish - White standard, For Black just add a "B" to the end of the model number
- Accessory bracket available to mount strobe lights directly on top of light bracket for uniform look





Commercial Grade Truck Equipment SM STROBE LIGHT MOUNTS

IMPROVED STROBE LIGHT MOUNTS

Part Numbers*	Strobe Light Type	Application
STEEL		
BSTRBMNTRCT	Rectangular	Mounted on 2x2 Crossbar
BSTRBMNTRND	Round	
BSTRBRCTWG	Rectangular	Mounted on LED light kit (BWGLITEMNT)
BSTRBRNDWG	Round	

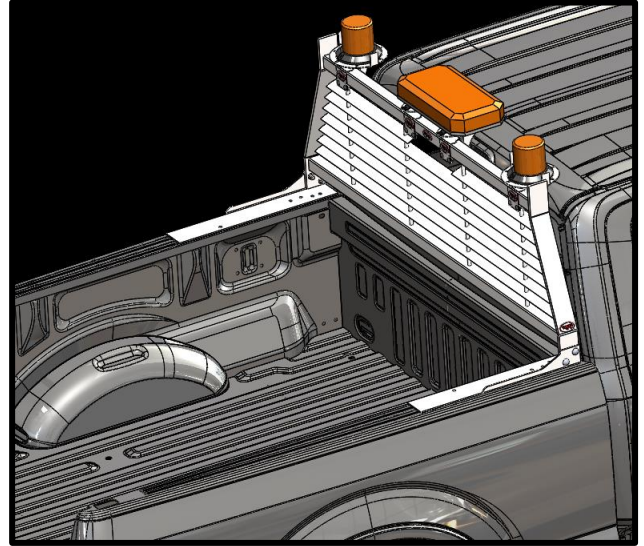
*All Strobe Mounts are available in a black powdercoat finish - just add a "B" to the end of the part number.

Features

- Easy, reliable bolt-on mounting for strobe lights.
- No more drilling holes. No unreliable magnets.
- Compatible with most round or rectangular lights.
- Fits all RKI window grilles.
- 12 and 14 gauge galvaneal construction.
- Super durable polyester powder coat finish.
- RKI standard lifetime warranty.

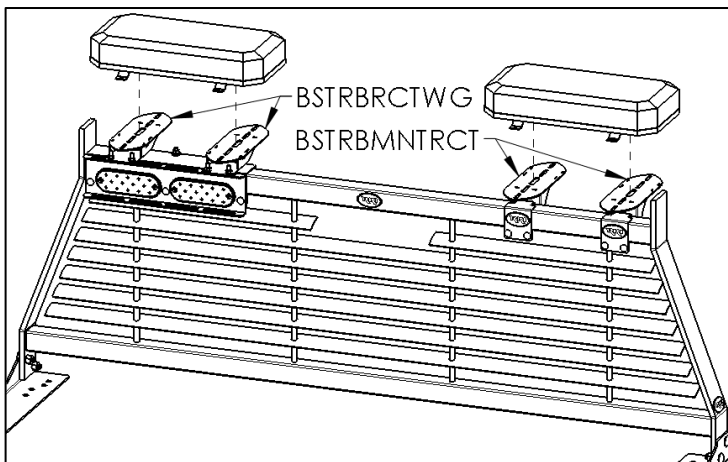
New Features

- Now offset towards front of truck for additional clearance of Cross boxes.
- Now includes gaskets for protection barrier between painted surfaces.



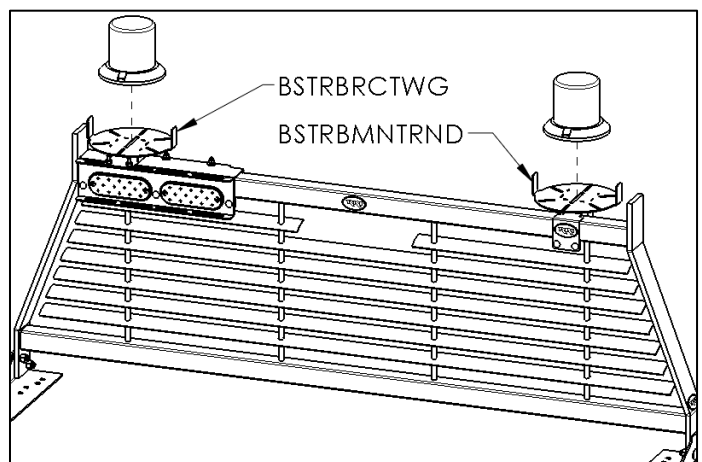
RECTANGULAR STROBE MOUNTS

- Separate mounts for any length light bar.
- Slots allow for wide range of light widths up to 10 1/2" span.
- Pair of brackets included.



ROUND STROBE MOUNT

- Variety of bolt patterns for a wide range of lights up to 7 1/2" diameter.
- Easy wire management.
- Use multiple mounts for creating light arrays.



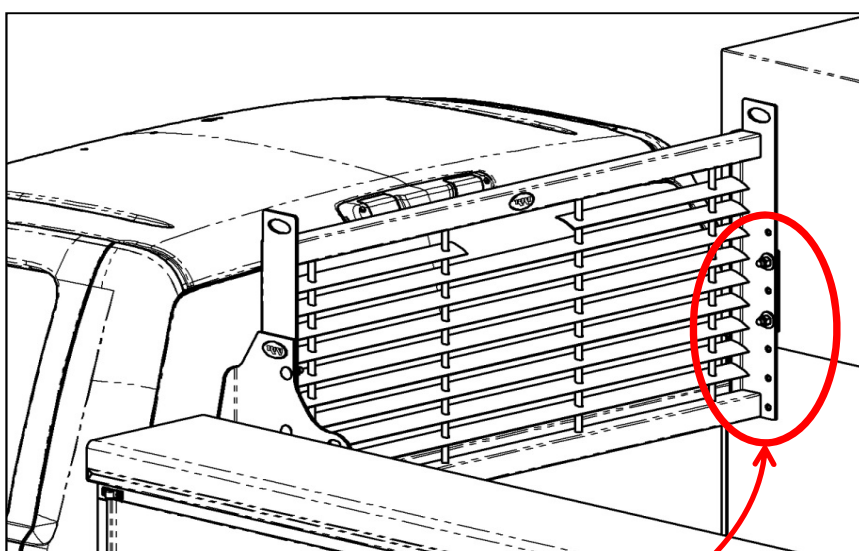
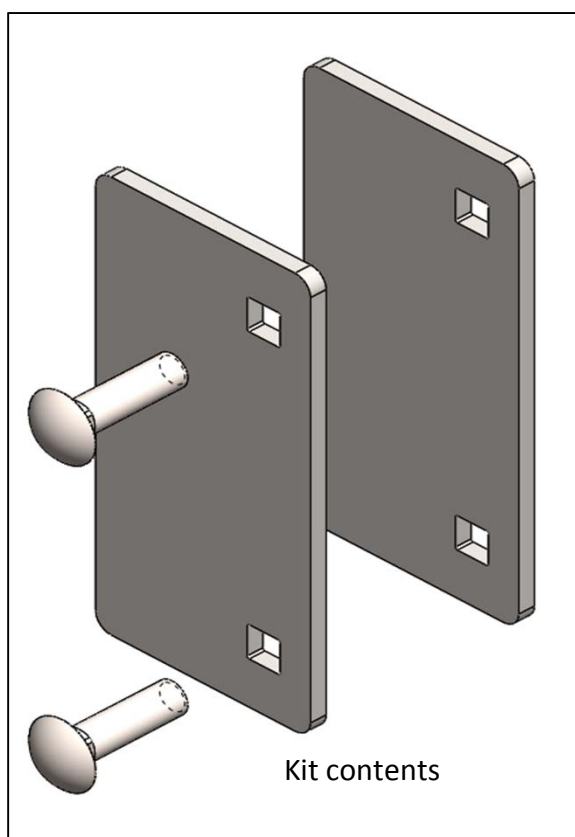


NEW WINDOW GRILLE ADAPTER KIT FOR RAISED FRONT EQUIPPED SERVICE BODIES

Features

- Adapts WG49, WG50, WG51, WG54, WG60 and WG65 for installation on bodies with the raised front compartment option.
- Requires one kit per raised front. (Raised front on street and curb side requires 2 kits)
- Powder coated white kit is WGBKRFC.
- Powder coated black kit is WGBKRFCB.

Supplemental Kit



Installation location

